

Add Drawing

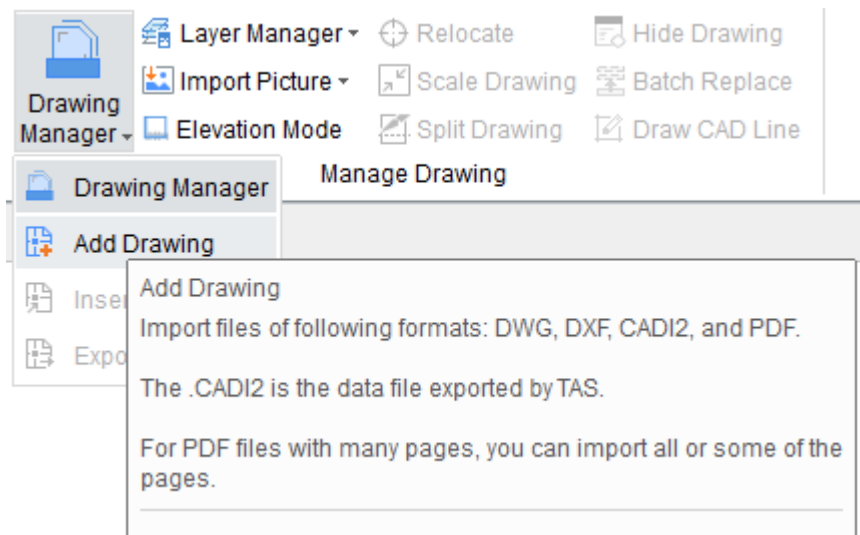
In actual projects, to make it easy to draw models, you can import CAD/PDF drawings in TAS, and then identify them directly or take them as references.

1. Click **Add Drawing**, and then select the drawing you want to import.

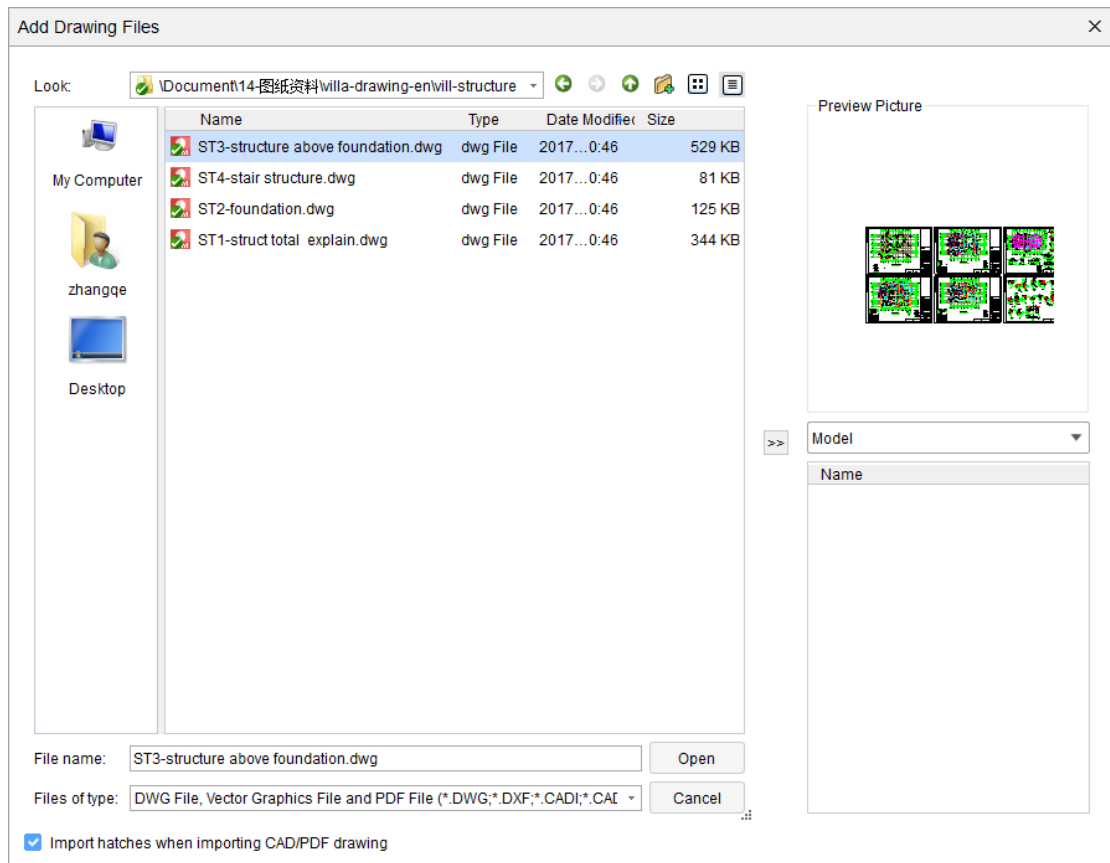
You can select both CAD and PDF drawings. For CAD drawings, you can import all models and layouts automatically. For PDF drawings, you can select pages manually, to import them as a whole or by page.

(1) Click on the drawing name, and the corresponding preview will be displayed in the right.

(2) Select multiple drawings to import simultaneously.



Cubicost- TAS C



2. To add drawings to the Draw view in TAS, click **Open**.

(1) The Drawing Manager window appears to the right of the drawing area.

(2) In the Drawing Manager, double-click the drawing name to switch drawings.

Cubicost- TAS C

The screenshot displays the Cubicost TAS C software interface. The main window shows a 3D BIM model of a building structure, with a grid overlay and various views. The interface includes a top menu bar with options like START, PROJECT SETTINGS, BIM MODEL, IDENTIFY, DRAW, VIEW, and QUANTITY. Below the menu bar, there are dropdown menus for 'Ground Floor', 'Axis', 'Axis Grid', and 'Ort-1'. The main workspace contains six viewports showing different perspectives of the model. A 'Drawing Manager' panel is visible on the right, showing a table with columns for 'Name' and 'Scale'. Below it, a 'Layer Manager' panel shows a list of layers with checkboxes for 'Picked Layer' and 'Original Layer'. The bottom status bar displays coordinates (X = 134701 Y = 59326), a 'Hide: 0' indicator, and a 'Cross-Layer Select' button. The bottom right corner shows the frame rate '38.4615 FPS'.

Name	Scale
1 ST3-structure ...	1:1 19/0

Specify first corner point, or select element entities

X = 134701 Y = 59326 1 0 Hide: 0 Cross-Layer Select 38.4615 FPS