

# Identify Finish Schedule

In actual projects, the Excel or CAD files are always attached with room process schedules, which contain room names, locations, and process names of floor finishes, wall finishes, skirting, ceiling finishes and suspended ceilings in rooms. You can use this function to build rooms and various finishes in rooms rapidly.

1. Click **Identify Finish Schedule**.
2. In the **Identify Schedule** window, click **Import Excel File**, and then select the Excel file you want to identify.
3. In the **Identification Mode** list, select **Identify Element Schedule** or **Identify finish Schedule**.

## 3.1 Identify Finish Schedule

- In the heading row, select the corresponding column info.

|   | 1               | 2            | 3        | 4                            | 5              | 6           | 7         | 8 |
|---|-----------------|--------------|----------|------------------------------|----------------|-------------|-----------|---|
| 1 | Room            | Floor Finish | Skirting | Interior Wall Finish         | Ceiling Finish |             |           |   |
| 2 | Location        | Floor        | Skirting | Room                         | Waterproofing  | Vertical WP | WP Height |   |
| 3 | Kitchen         | HTT1         | HTT      | Floor Finish                 | pe 1           | WP Type 1   | 300       |   |
| 4 | Bedroom         | HTT4         | HTT      | Waterproof (Horizontal)      | pe 1           | WP Type 1   | 300       |   |
| 5 | Storage Room    | HTT2         | HTT      | Waterproof (Vertical)        | pe 1           | WP Type 1   | 300       |   |
| 6 | Children's Room | HT           | HTT      | Waterproof (Vertical) Height | pe 1           | WP Type 1   | 300       |   |
|   |                 |              |          | Skirting                     |                |             |           |   |
|   |                 |              |          | Skirting Height              |                |             |           |   |
|   |                 |              |          | Interior Wall Finish         |                |             |           |   |
|   |                 |              |          | Exterior Wall Finish         |                |             |           |   |

- Select the corresponding floor of each row from the Corresponding Floor list.

## Cubicost- TAS C

Identify Schedule

Identify Element Schedule      Identify Finish Schedule

Worksheet: Sheet1      Minimum Unit in Drawing: mm      Identification Mode: Identify by room

| 1 | 2               | 3            | 4        | 5               | 6                 | 7             | 8           | 9         | 10      |           |
|---|-----------------|--------------|----------|-----------------|-------------------|---------------|-------------|-----------|---------|-----------|
| 1 | Room            | Floor Finish | Skirting | Skirting Height | Interior Wall ... |               |             |           |         |           |
| 2 | Location        | Floor        | Skirting | Skirting Height | Wall/ Columns     | Waterproofing | Vertical WP | WP Height | Ceiling | Suspend C |
| 3 | Kitchen         | HTT1         | HTT      | 200             | CT-1              | WP Type 1     | WP Type 1   | 300       |         |           |
| 4 | Bedroom         | HTT4         | HTT      | 200             | CT-1              | WP Type 1     | WP Type 1   | 300       |         |           |
| 5 | Storage Room    | HTT2         | HTT      | 200             | HTT               | WP Type 1     | WP Type 1   | 300       |         |           |
| 6 | Children's Room | HT           | HTT      | 200             | HTT               | WP Type 1     | WP Type 1   | 300       |         |           |
| 7 | Bathroom        | HTT4         | HTT      | 200             | HTT               |               |             |           |         |           |

Operation Steps:  
 1. Select worksheet; 2. Select identification mode; 3. Select column title.  
 4. Click Identify button, and corresponding elements will be generated.

- Click **OK**.

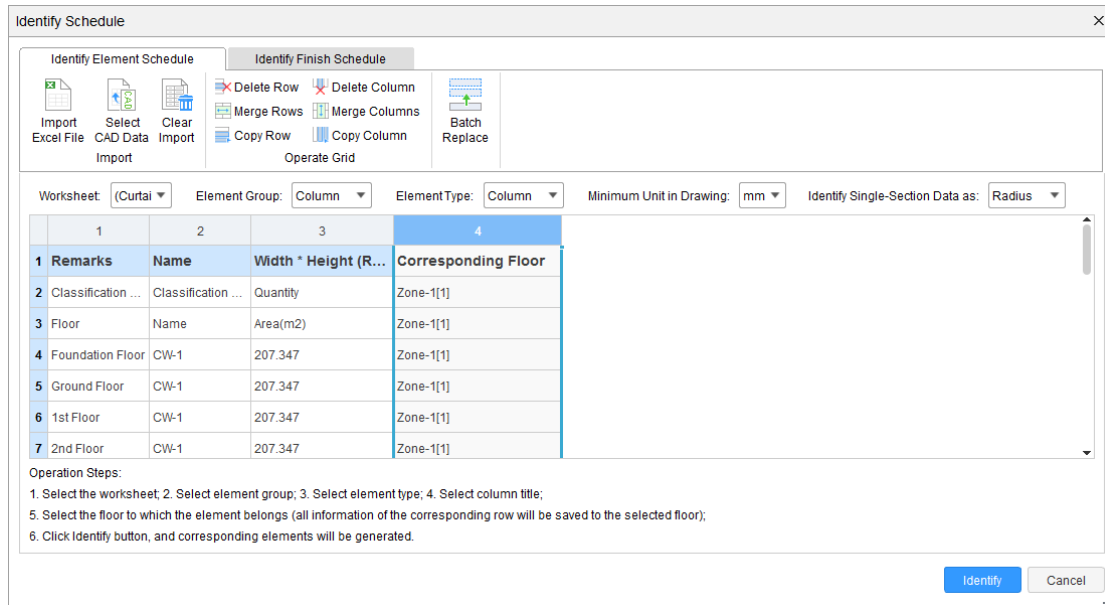
### 3.2 Identify Element Schedule

- In the heading row, select the corresponding column info.

| Remarks | Name | Width | Corresponding Floor |
|---------|------|-------|---------------------|
|---------|------|-------|---------------------|

- Select the element type of each row from the **Type** list, and select the corresponding floor of each row from the **Corresponding Floor** list.

## Cubicost- TAS C



- Click **OK**.

### Note

1. Select CAD Data: To import info to the window, click Select CAD Data, drag-select the scope that you want to identify, and then right-click to confirm.
2. Clear Import: To clear imported info, click Clear Import.
3. Delete Row: Delete the selected row.
4. Delete Column: Delete the selected column.
5. Copy Row: Copy the selected row.
6. Copy Column: Copy the selected column.
7. Merge Rows: Select at least two rows to merge, and the latter row will be merged to the former row.

## **Cubicost- TAS C**

---

8. Merge Columns: Select at least two columns to merge, and the latter column will be merged to the former column.
  
9. Batch Replace: Replace the selected info with the content that you want.