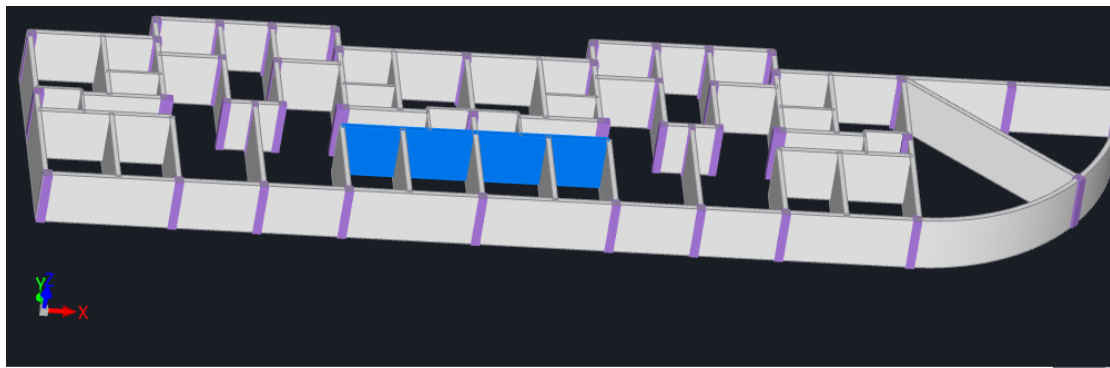


View Expression, 3D Deduction and 3D Measure

You can use this function to view the detailed expressions of entities. And you also can edit quantities manually in the View Expression window.



View Element Entity Quantity Expression

Element Type: Element Name: RCwall-240 Quantity Name: [All]

Quantity Name	Code	Quantity Expression	Quantity	Unit	Count Tag	Remarks
Volume	V	$(13.200 \times \text{Length} \times 3.000 \times \text{Height of Wall}) - 0.240 \times \text{Thickness of Wall} \times 3.802 \times \text{Deduct beam}$	5.702	m3	<input checked="" type="checkbox"/>	
Area of Formwork	AF2	$(13.440 \times \text{Length of Left Side} + 12.960 \times \text{Length of Right Side}) \times 3.000 \times \text{Height of Formwork to Wall} - 3.600 \times \text{Deduct wall} - 30.240 \times \text{Deduct beam}$	45.360	m2	<input checked="" type="checkbox"/>	
Area	A	$(13.200 \times \text{Length} \times 3.000 \times \text{Height of Wall}) - 15.840 \times \text{Deduct beam}$	23.760	m2	<input checked="" type="checkbox"/>	
Weight of Rebar	WR	$5.702 \times \text{Volume} \times 30.000 \times \text{Steel Ratio}$	0.171	t	<input checked="" type="checkbox"/>	
Number	N		1	pc	<input checked="" type="checkbox"/>	
Net Length of Wall	NLW	$13.200 \times \text{Original Net Length}$	13.200	m	<input checked="" type="checkbox"/>	
Original Thickness of Wall	OTW		0.240	m	<input checked="" type="checkbox"/>	

Note

1. Element Type: When view expressions of rooms, you can select room or its attached finishes. For common elements, it is unavailable.
2. Element Name: Display the corresponding element name of the current entity. For complicated elements, you can select main elements or their units.

Cubicost- TAS C

3. Quantity Name: Display all quantity names of the current element.

4. Edit report quantities manually
 - 4.1 Insert: Insert a new record for you to edit quantities manually.

 - 4.2 Copy/Paste Row on shortcut menu: Use to copy an existing report quantity and modify it.

 - 4.3 Count Tag: Selecting the Count Tag check box helps you to export the selected report quantity to reports.

5. Lock: After modifying quantities manually, you can use this function to lock entities and thus avoid changes of quantities when performing Summary Calculate again. The quantities of the locked entities will remain unchanged. The entities whose quantities are modified manually will be locked automatically.

6. Unlock: If you want to cancel the locked status of entities, you can use this function.

7. Delete: Use to delete the new records.

8. Keyboard Shortcut: F11.

3D Deduction

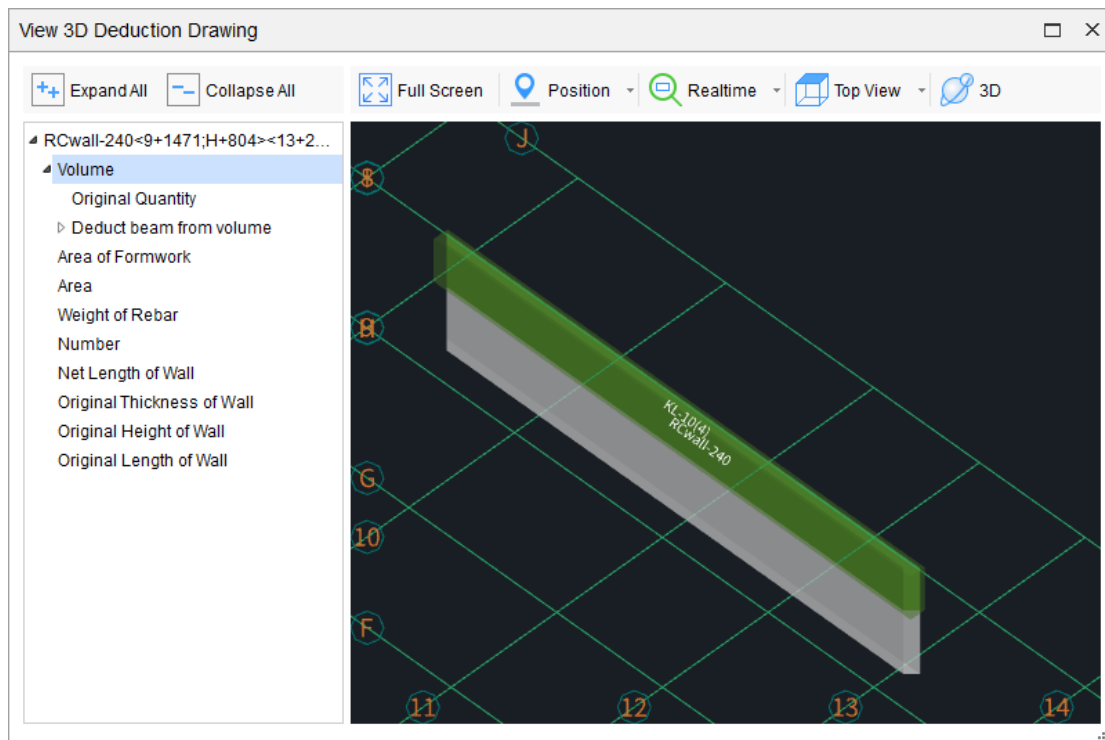
To view the deduction between the current entity and the entities intersecting with it, you can use this function.

1. Select the entity you want, and then press F11 or click **View Expression**.
2. In View Element Entity Quantity Expression, click **3D Deduction**.

Note

1. You can expand or collapse the quantity tree on the left.
2. Click a quantity on the left, and then on the right, the model and deduction corresponding to the quantity appear.
3. With the functions of Full Screen, Realtime, Top View and 3D, you can adjust the display location and angle of models, to view the relationship among models more clearly and easily.

Cubicost- TAS C

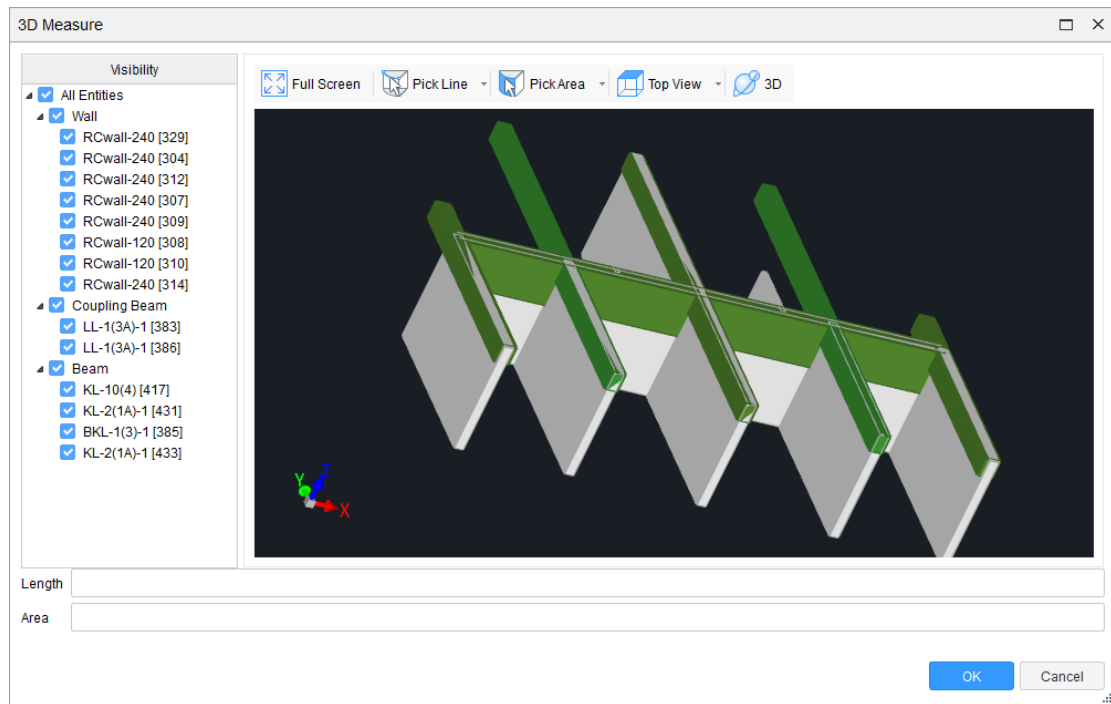


3D Measure

3D Measure can be used to view the 3D models for entity deduction.

1. In the View Expression window, click **3D Measure** to enter the measure view.
2. Select Pick Line or **Pick Area**, and then specify the line or area that you want to measure on entities.
3. At the bottom of the window, the selected length and area are displayed.

Cubicost- TAS C



Note

If you select multiple segments, the measurement result will be added up automatically.